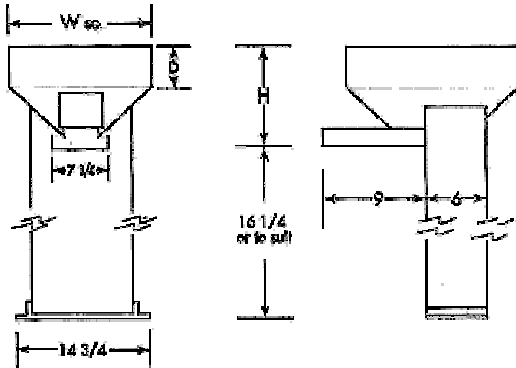


Standard Supply Hoppers

Vibratory supply hoppers are designed for the controlled feeding of bulk parts into any style feeder. The vibrating tray under the bin is turned on and off by a paddle switch or other sensor in the bowl. The feed rate is set by adjusting the door opening in the bin and adjusting the amplitude of the vibrating tray (which is regulated by the controller).

Standard supply hoppers are used for parts that flow easily and are usually less than two inches long. The total weight of parts being fed should generally not exceed 40 pounds. Other models are available for heavier and larger parts.



**Table Mounted Hopper w/
w/ Electric or Pneumatic Vibratory Drive Pan**

Model Number	Capacity Cu. Ft.	Width W	Depth D	Height H	Weight Lbs.*
TTH-1/2	1/2	15 3/4	2 1/2	9	60
TTH-1	1	16	6	12 1/2	85
TTH-2	2	18	8	16	100
TTH-3	3	24	6	16	115
TTH-4	4	24	9	19	125
TTH-5	5	24	12	22	140
TTH-6	6	24	15	25	150

* Add 10-25 pounds for stainless steel construction and approximately 120 pounds for floor pedestals. Low profile models and belt type hoppers are also available.

These units run on unrectified current from a 115 or 230 volt, 50 or 60-hertz single-phase power supply. The maximum amperage at 115 VAC is 5 amps.

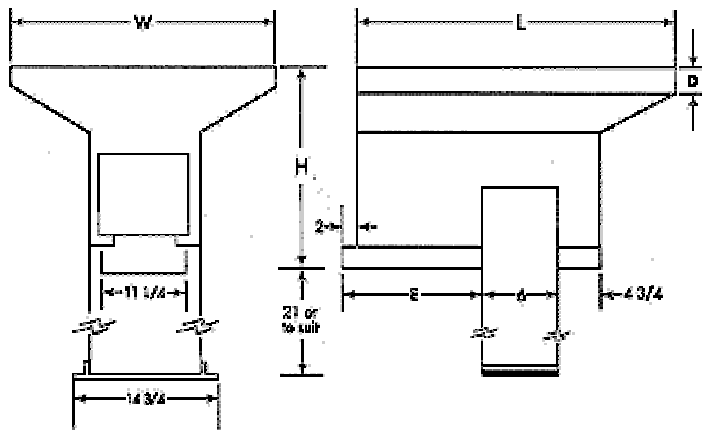


Straight Wall Supply Hoppers

Straight-front supply hoppers are similar to standard supply hoppers except for the straight front, larger bin opening, and wider tray. These modifications allow for the controlled feeding of parts that flow easily and are up to approximately three inches long.

For this hopper style, the total weight of parts being fed should not exceed 30 pounds. Other models are available for heavier and larger parts and parts that tend to tangle. Various models of supply hoppers and elevating conveyors can be customized to solve most bulk feeding requirements.

These hoppers are fabricated from 11-gauge 304 stainless steel and are tig welded. All welds are ground and polished so there are no pits or seams. These supply hoppers can be mounted on height-adjustable floor pedestals.



Model Number	Capacity Cu. Ft.	Width W	Length L	Height H	Extension E	Depth D	Weight Lbs.*
SHO-1/2	1/2	12	18	9	9 1/8	-	110
SHO-1	1	14 1/4	19 1/2	10 3/4		-	130
SHO-2	2	14 1/8	25 1/8	15 3/4	15 1/2	-	145
SHO-3	3	20 1/4	25 1/4	18 3/4		-	165
SHO-4	4	25 1/8	30 3/4	22		3/4	180
SHO-5	5			24 1/4		3	200
SHO-6	6			26 1/2		5 1/4	215

* Add approximately 120 pounds for floor pedestals. Low profile models and belt type hopper are also available.

These units run on rectified current from a 115 or 230 volt, 50 or 60-hertz single-phase power supply. The maximum amperage at 115 VAC is 7 amps.