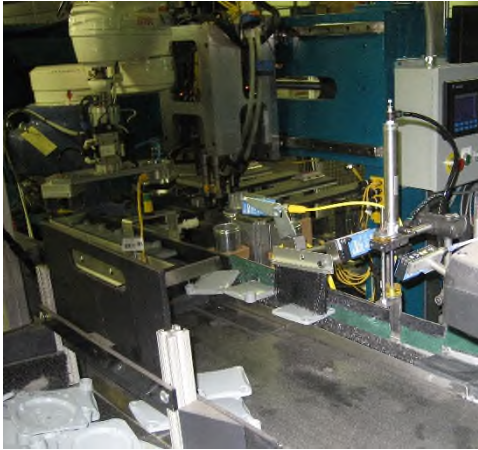




Flexible Automation- Active Orientation

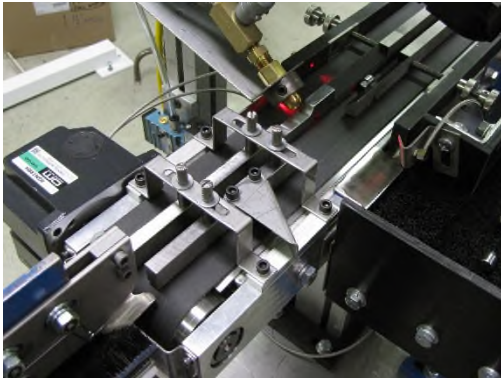
Dyna-Slide line provides flexibility with a unique ability to provide part, package and material feeders with quick change tooling and or sensor based or vision based programmable tooling to efficiently and gently orient families of parts. Active tooling can often be incorporated for machine loading.



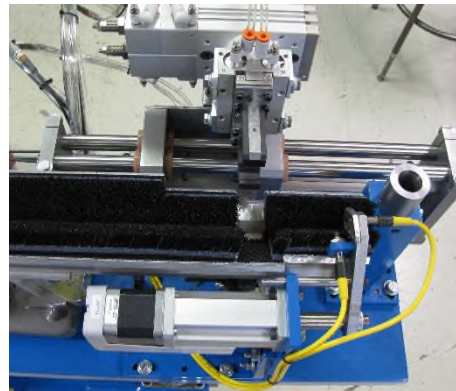
Vision –Pattern Recognition & Selection
Electrical Closure Orientation & Robotic
Placement to Assembly Operation



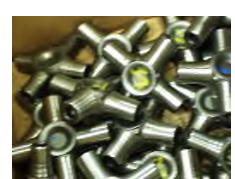
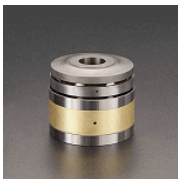
Vision –Pattern Recognition & Selection
Carbide Bit Orientation to Grind Process



Sensor Based Sortation



Orientation w/ precision placement to dead nest



The gentle feeding capability of the long proven Dyna-Slide technology when combined with modern PLC based sensors and vision based tooling provides the flexibility to feed and orient parts packages or materials deemed too difficult to feed due to physical characteristics such as high surface value, fragility or poor geometry. This capability can often be combined with machine loading to reduce costs

Integrated Flexible Solutions



Magazine Tube Feeder Supplying Parts to rifled V-Tack Feeding Chamfer & Trim Machine



Medical Component Orientation to Integrators vision inspection cell.



Electronic Part -Oriented and meter fed to OEM Substrate Dispenser



Aluminum Truck Wheel Oriented and metered to Conductive Test Cell



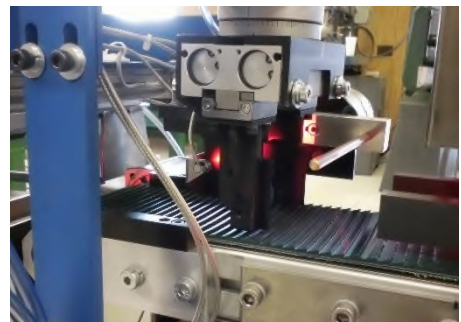
Part feed from integrated bulk supply, fed & oriented to defined end leading and the automatically to Lathe



Vision Based Material Sortation & Grading



Pattern Formation- Furnace Loading



Precision Loading-Machine Tool